

SMTTP



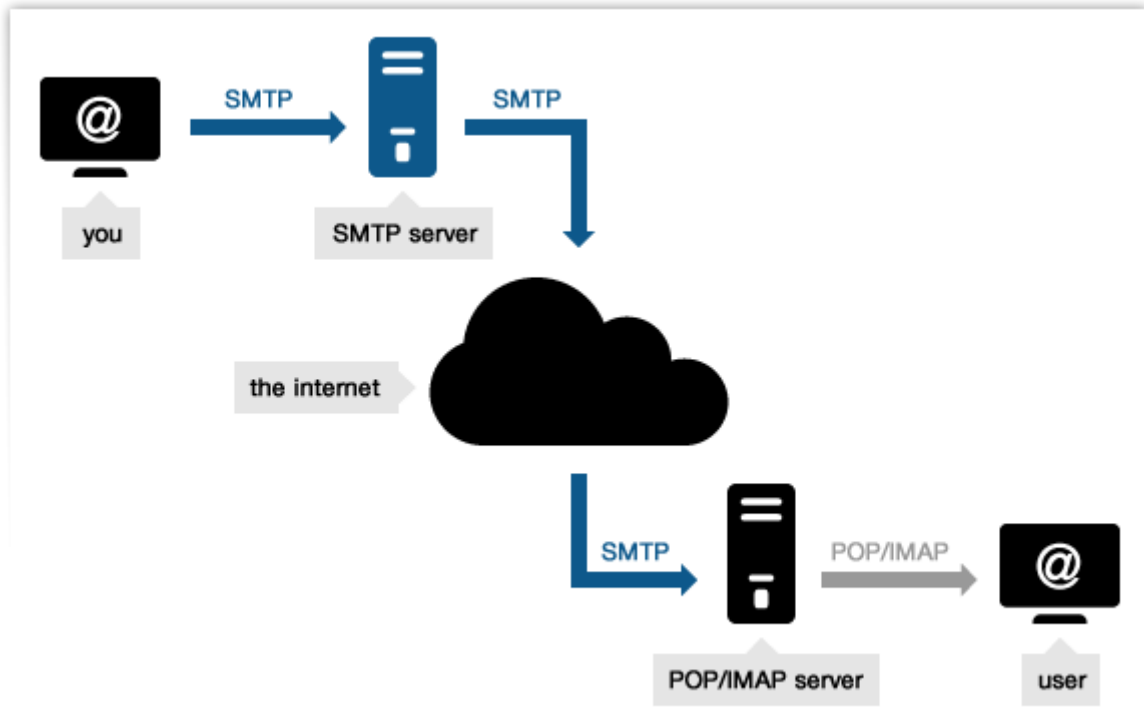
20 NOVEMBRE 2022
DIGITAL TEAM ACADEMY
Zotrim Uka

Table des matières

1.0	SMTP Protocol	2
1.1	Send a mail	5
1.2	Send a mail outside the server	5

1.0 SMTP Protocol

« The Simple Mail Transfer Protocol (SMTP) is an internet standard communication protocol for electronic mail transmission. Mail servers and other message transfer agents use SMTP to send and receive mail messages. Discover the SMTP protocol, find all the commands to send a mail. “



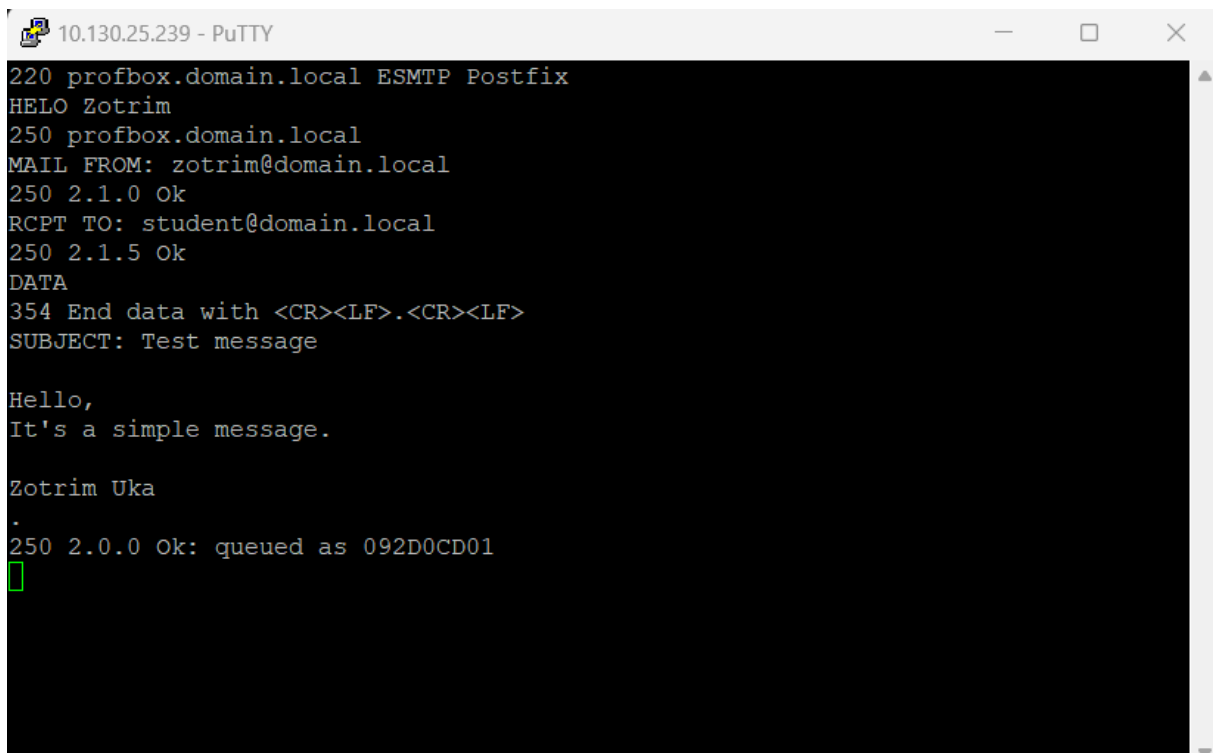
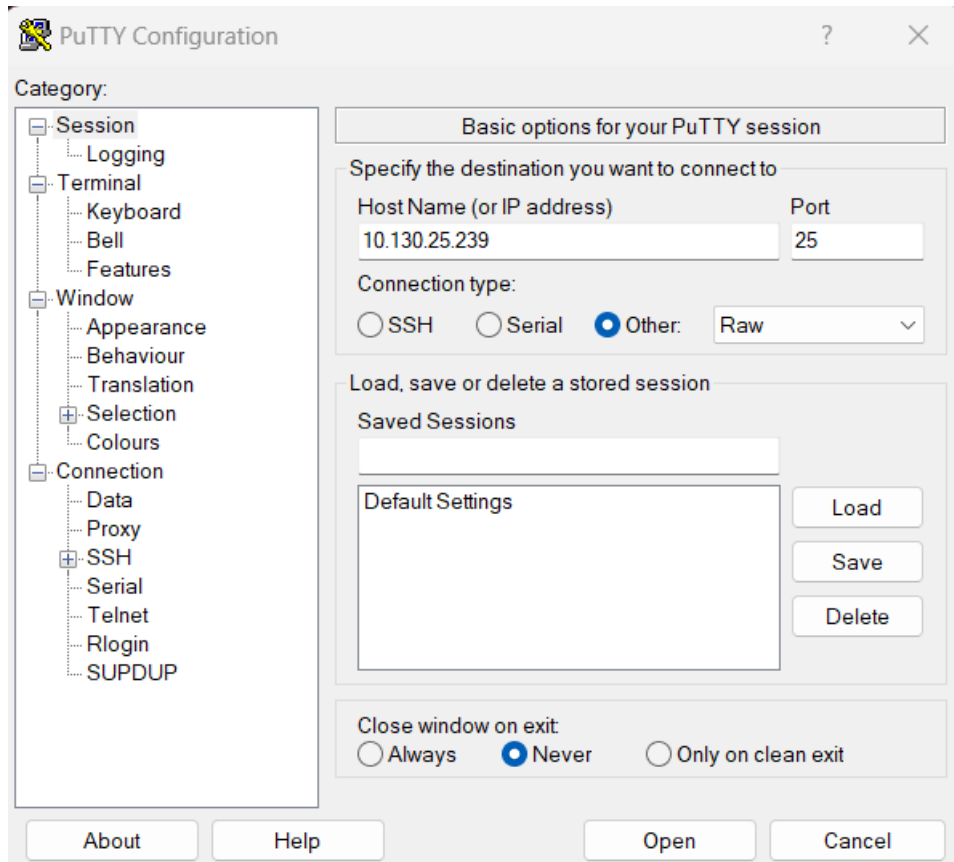
SMTP commands

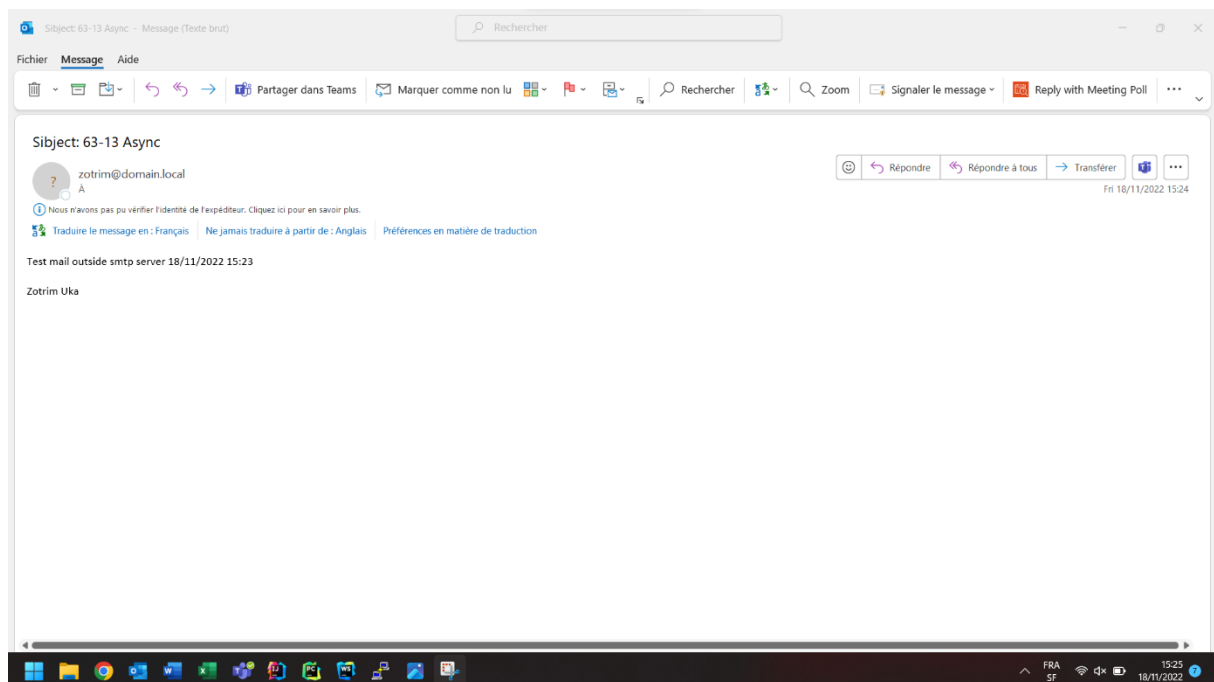
Subcommand	Supported by SMTP Server	Supported by CSSMTP application	Description	Reference
DATA	YES	YES	Defines information as the data text of the mail body.	DATA command: Define the following information
EHLO	NO	YES	Identifies the domain name of the sending host to SMTP.	EHLO command: Identify the domain name of the
EXPN	YES	NO	Verifies whether a mailbox	Command is not implemented

Subcommand	Supported by SMTP Server	Supported by CSSMTP application	Description	Reference
			exists on the local host.	
HELO	YES	YES	Identifies the domain name of the sending host to SMTP.	HELO command: Identify the domain name of the s
HELP	YES	NO	Provides help with SMTP commands.	Command is not implemented
MAIL FROM	YES	YES	Specifies the mail sender.	MAIL FROM command: Specify the sender of the m
NOOP	YES	NO	Returns a 250 OK return code when SMTP is responding.	Command is not implemented
QUEU	YES	NO	Gets information about mail that is queued at SMTP for delivery.	Command is not implemented
QUIT	YES	YES	Stops SMTP processing.	QUIT command: End SMTP processing
RCPT TO	YES	YES	Specifies the mail recipients.	RCPT TO command: Specify the recipients of the m
RSET	YES	YES	Resets the SMTP processing to the initial state.	RSET command: Reset the SMTP processing to the
STARTTLS	NO	YES	Tells the CSSMTP application that the SMTP server is currently able to negotiate the use of TLS.	STARTTLS command: Indicate the ability to negoti
TICK	YES	NO	Inserts an identifier into the batch	Command is not implemented

	Supported Subcommand Server	Supported by SMTP Server	Supported by CSSMTP application	Description	Reference
				SMTP response data set.	
VERB	YES	NO		Enables or disables verbose mode. Note: VERB ON can cause spool problems for SMTP if the REPLY TO: <i>user</i> is not a valid NJE <i>node.user</i> .	Command is not implemented
VERFY	YES	NO		Verifies whether a mailbox exists on the local host.	Command is not implemented

1.1 Send a mail





To connect you must use port 25

Step 1: Declare your domain name or IP address

You can set name.local.domain or whatever you want in 'HELO', because the server does not check its authenticity, this is one of the drawbacks of this protocol.

> HELO local.domain.name

Step 2: Set the sender's email address

> MAIL FROM: sender@adress.ext

Step 3: Set the recipient's email address

> RCPT TO: recipient@adress.ext

Step 4: To write the message, type DATA and press Enter

> DATA

Step 5: On the first line, type "SUBJECT: Your Subject" and press "Enter" twice

> SUBJECT: Test message

Step 6: Continue typing your message

Test mail smtp server

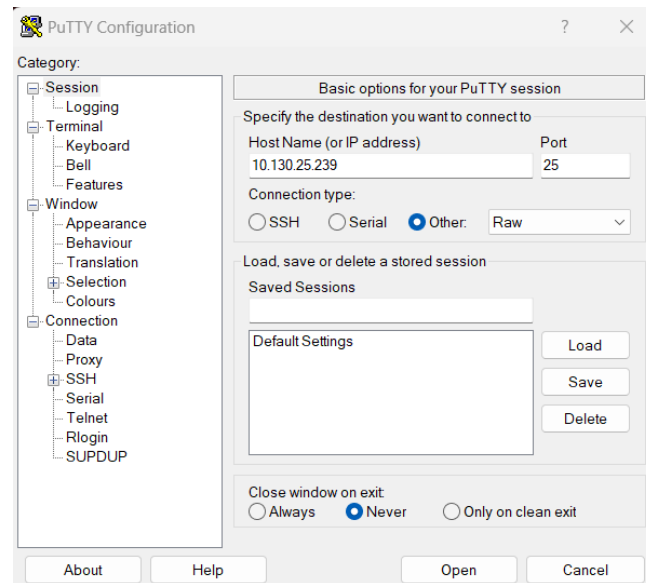
Zotrim Uka

Step 7: Put a single dot (.) on a line and press "Enter" to send your message.

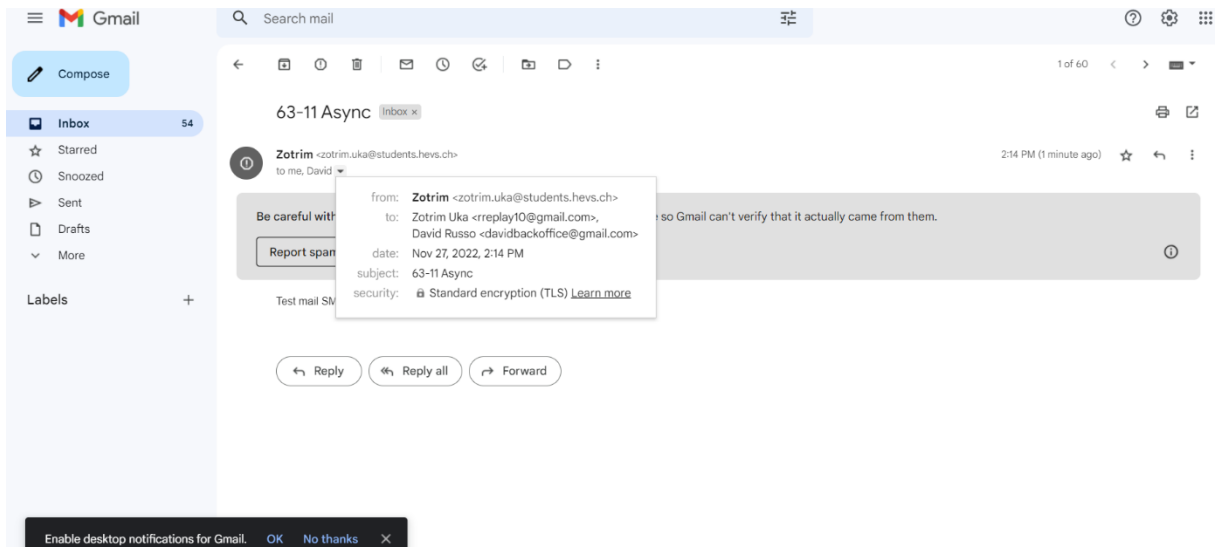
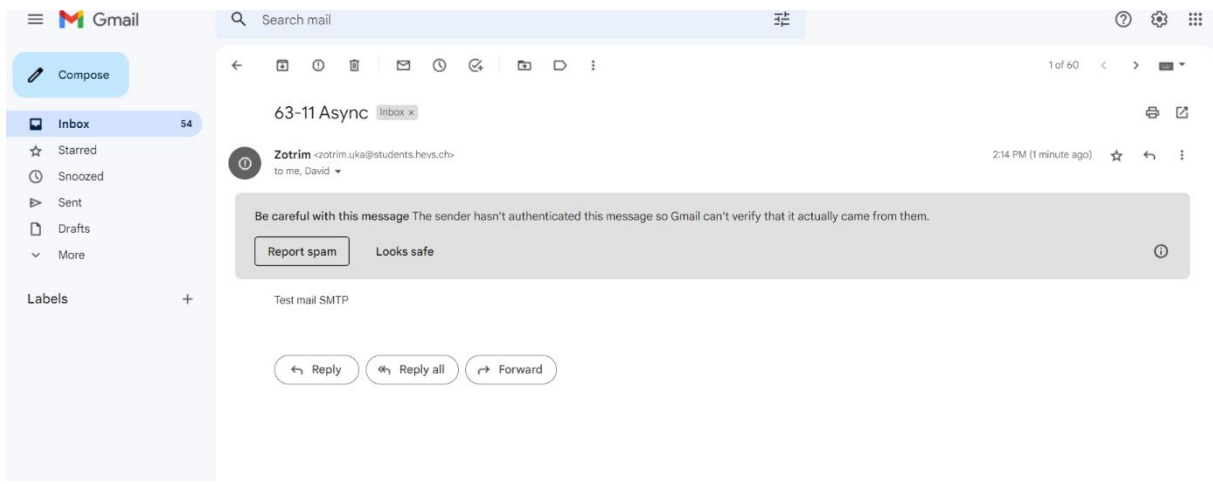
> .

Step 8: Close the connection

1.2 Send a mail outside the server



```
10.130.25.239 - PuTTY
220 profbox.domain.local ESMTP Postfix
HELO zotrim.uka@students.hevs.ch
250 profbox.domain.local
AUTH LOGIN
334 VXNlcm5hbWU6
c3R1ZGVudA==
334 UGFzc3dvcmQ6
aGVzc292cyE=
235 2.7.0 Authentication successful
MAIL FROM:<zotrim.uka@students.hevs.ch>
250 2.1.0 Ok
RCPT TO: <rreplay10@gmail.com>
250 2.1.5 Ok
RCPT TO: <davidbackoffice@gmail.com>
250 2.1.5 Ok
DATA
354 End data with <CR><LF>.<CR><LF>
Message-ID: <Y8maaaCz9nuOLfm3cO91PRBzyqCOjb@domain.local>
From: Zotrim <zotrim.uka@students.hevs.ch>
TO: Zotrim Uka <rreplay10@gmail.com>, David Russo <davidbackoffice@gmail.com>
SUBJECT: 63-11 Async
Test mail SMTP
.
250 2.0.0 Ok: queued as 0C8AFCD7E
█
```

First, we identify ourselves to the server with the command "HELO" followed by a name.

Then we use the command "AUTH LOGIN" to connect to the server.

The server asks us to enter a username and a password in Base64.

The username was "student" and the password "hessovs!"

student → c3R1ZGVudA==

hessovs! → aGVzc292cyE=

Once connected to the server with the response "235 2.7.0 Authentication successful", we can enter the following command "MAIL FROM" followed by an email address to choose the email address with which we will send the mail.

Then we enter the command "RCPT TO" with the email addresses to choose our recipient.

Once the recipients are noted, we use the DATA command.

It is important to define a Message-ID in the header in order not to be rejected by Google's servers.

Then we have to put the command From to know with which address we are going to send the mail.

Then we put TO for the recipients.

Then it is like the previous point, we enter the command Subject: my subject.

Then, we write our message, once finished, we press ENTER and we put a dot and we do ENTER again.

1.3 Bibliography

<http://www.unit-conversion.info/texttools/random-string-generator/>

<https://serversmtp.com/fr/hote-smtp/>

<https://www.ibm.com/docs/en/zos/2.3.0?topic=set-smtp-commands>